



MADE EASY

India's Best Institute for IES, GATE & PSUs

UPPSC-2019

UTTAR PRADESH

PUBLIC SERVICE COMMISSION 2019

Assistant Engineer

Electrical Engineering PAPER-I

Exam held on 13-12-2020

Scroll down for
Questions and Answer Keys

www.madeeasy.in

Corporate Office: 44-A/1, Kalu Sarai, New Delhi - 110016 | **Ph:** 011-45124612, 9958995830

Delhi | Hyderabad | Noida | Bhopal | Jaipur | Lucknow | Indore | Pune | Bhubaneswar | Kolkata | Patna

UPPSC - 2019

Electrical Engineering | Assistant Engineer

Exam held on 13-12-2020

Q.1 इनमें से दन्त्य ध्वनियाँ हैं

- (a) च, छ, ज, झ (b) प, फ, ब, भ
(c) त, थ, द, ध (d) ट, ठ, ड, ढ

Ans. (c)

Q.2 इनमें से व्यंजन सन्धि आधारित शब्द है

- (a) अन्वेषण (b) उद्धार
(c) लघूर्मि (d) पुरोहित

Ans. (b)

Q.3 "चौराहा" शब्द में समास है

- (a) तत्पुरुष (b) बहुव्रीहि
(c) अव्ययीभाव (d) द्विगु

Ans. (d)

Q.4 'निवृत्ति' शब्द का विलोम है

- (a) सद्वृत्ति (b) सुवृत्ति
(c) प्रवृत्ति (d) कुवृत्ति

Ans. (b)

Q.5 निम्नलिखित में से 'शारदा' का पर्यायवाची शब्द है

- (a) कमला (b) कौमुदी
(c) वारुणी (d) गिरा

Ans. (d)

Q.6 निम्नलिखित में से तद्भव शब्द है

- (a) वानर (b) तेल
(c) पीत (d) घोटक

Ans. (b)

Q.7 'मृत्यु के इच्छुक' – इस वाक्यांश के लिए एक शब्द है

- (a) मुमुक्षा (b) मुमूर्षु
(c) मुमूर्षा (d) मुमुक्षु

Ans. (b)

Q.8 'चीनांशुक' शब्द का अर्थ है

- (a) तंतु (b) रेणु
(c) रेशम (d) चीनी मिट्टी

Ans. (d)

Q.9 'अंदर-अंदर कड़ाही में गुड़ पगना' – इस मुहावरे का सही अर्थ है

- (a) ज्ञान होना (b) गुप्त मंत्रणा होना
(c) स्वसीमित होना (d) किसी काम न आना

Ans. (b)

Q.10 अनेकार्थक शब्द 'सारंग' का निम्नलिखित में से एक अर्थ नहीं है

- (a) भौरा (b) कामदेव
(c) तलवार (d) ज्योतिषी

Ans. (c)

Q.11 निम्नलिखित में से शुद्ध वर्तनी का शब्द है

- (a) अनाधिकार (b) रचइता
(c) सहस्त्र (d) संग्रहीत

Ans. (c)

Q.12 समास-योजना की दृष्टि से इनमें से एक अशुद्ध युग्म है

- (a) सतसई – द्विगु समास
(b) तुलसीकृत – तत्पुरुष समास
(c) मंदोदरी – बहुव्रीहि समास
(d) मरणासन्न – अव्ययीभाव समास

Ans. (c)

Q.13 अलग होने के अर्थ में 'से' कारक-चिह्न का प्रयोग होता है

- (a) अपादान कारक में
- (b) करण कारक में
- (c) करण कारक तथा अपादान कारक दोनों में
- (d) सम्बन्ध कारक में

Ans. (c)

Q.14 'पवन' शब्द का सन्धि-विच्छेद है

- (a) पौ + अन (b) पो + अन
- (c) प + अवन (d) प + वन

Ans. (b)

Q.15 इनमें से शुद्ध वर्तनी का रूप है

- (a) निरझरणी (b) निरझरिणी
- (c) निर्झरिणी (d) निर्झरणी

Ans. (c)

Q.16 निम्नलिखित में से एक शब्द में उपसर्ग का प्रयोग नहीं हुआ है, वह शब्द है :

- (a) सहज (b) अनुभव
- (c) संचार (d) नयन

Ans. (d)

Q.17 इनमें से 'अनघ' का विलोम शब्द है

- (a) निरघ (b) अघी
- (c) कृती (d) सनघ

Ans. (d)

Q.18 इनमें से 'पक्षी' शब्द का पर्यायवाची नहीं है

- (a) पिशुन (b) विहंग
- (c) शकुनि (d) द्विज

Ans. (a)

Q.19 नीचे दिये गये वाक्यांश और उसके लिए प्रयुक्त होने वाले एक शब्द का एक युग्म गलत है, वह है

- (a) उत्तराधिकार में प्राप्त सम्पत्ति — धरोहर
- (b) जिसे प्रमाण द्वारा सिद्ध न किया जा सके — अप्रमेय

(c) सीमा का अनुचित रूप से किया गया उल्लंघन — अतिक्रमण

(d) पूरब और उत्तर (दिशा) के बीच का कोना — ईशान

Ans. (a)

Q.20 निम्नलिखित में से 'महीसुर' शब्द का अर्थ है

- (a) पृथ्वी का रक्षक (b) महिषासुर
- (c) राक्षस (d) ब्राह्मण

Ans. (a)

Q.21 निम्नलिखित में से तत्सम शब्द है

- (a) विवाह (b) ईख
- (c) खीर (d) गिद्ध

Ans. (a)

Q.22 'ने + अन' = 'नयन' में सन्धि है

- (a) यण सन्धि (b) गुण सन्धि
- (c) अयादि सन्धि (d) वृद्धि सन्धि

Ans. (c)

Q.23 निम्नलिखित में से शुद्ध वर्तनी का शब्द है

- (a) उज्ज्वल (b) उज्जवल
- (c) उजवल (d) उज्वल

Ans. (a)

Q.24 'बुद्धिहीन' शब्द व्याकरण की दृष्टि से इनमें से किस संवर्ग में है?

- (a) संज्ञा (b) सर्वनाम
- (c) विशेषण (d) क्रिया

Ans. (c)

Q.25 इनमें से एक वाक्य शुद्ध है, वह है :

- (a) मेरा प्राण संकट में है।
- (b) सोमवार को रेलवे के कई कर्मचारी गिरफ्तार हुए।
- (c) अपराधी को मृत्युदंड की सजा दी गयी है।
- (d) महादेवी वर्मा छायावाद की प्रसिद्ध कवयित्री हैं।

Ans. (d)



MADE EASY

India's Best Institute for IES, GATE & PSUs

Under the leadership of

Mr. B. Singh

**Chairman &
Managing Director**



LIVE CLASSES

at **MADE EASY PRIME**

EXPERIENCE
CLASSROOM LEARNING AT HOME

ESE+GATE 2022 & GATE 2022

- ✓ Live classes by India's top faculties (Fixed schedule of 3 hrs/day).
- ✓ Additional facility to watch recorded lectures with doubt clearing facility.
- ✓ Teaching pedagogy exactly similar to classroom course.
- ✓ Concept practice with workbooks and updated theory books.
- ✓ Assessment of performance through subject-wise tests.
- ✓ Systematic subject sequence and time bound completion of syllabus.

Evening Batch

28th Dec, 2020
5.30 PM - 8.30 PM

Morning Batch

18th Feb, 2021
8.30 AM - 11.30 AM

EMI Options
available



8851176822, 9958995830



www.madeeasyprime.com

MADE EASY is
Celebrating
20 Years
of **Excellence**



Offer valid till
27th Dec, 2020

OFFLINE CLASSES (Regular and Weekend) commencing from **21st Feb, 2021**

If covid condition does not improve, then candidates will get access to live/online classes,
till resumption of offline classes.

011-45124612, 9958995830

www.madeeasy.in

Q.26 A single phase transformer on full load has an impedance drop of 20 V and resistance drop of 10 V. The value of power factor at zero voltage regulation would be

- (a) 0.86 lagging (b) 0.86 leading
(c) 0.90 leading (d) 0.707 lagging

Ans. (b)

Q.27 Starting torque and maximum torque of 3-phase I.M. varies as respectively

- (a) $\frac{1}{f^2}$ and $\frac{1}{f^3}$ (b) $\frac{1}{f^3}$ and $\frac{1}{f^2}$
(c) $\frac{1}{f}$ and $\frac{1}{f^2}$ (d) $\frac{1}{f^2}$ and $\frac{1}{f}$

Ans. (b)

Q.28 The power factor of a synchronous motor

- (a) Improves with increase in excitation and may even become leading at high excitation.
(b) Decreases with decrease in excitation.
(c) Is independent of its excitation.
(d) Increases with loading for a given excitation.

Ans. (a)

Q.29 The impedance of a delta/star, 11000V/400 V transformer of a capacity 100 kVA is $(0.02 + j0.07)$ p.u. The ohmic impedance per phase referred to primary side is

- (a) $(0.02 + j0.07)$ ohm
(b) $(0.55 + j1.925)$ ohm
(c) $(42 + j147)$ ohm
(d) $(72.6 + j254.1)$ ohm

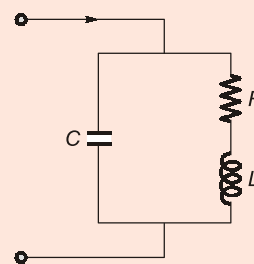
Ans. (d)

Q.30 An electric motor with constant-output power will have torque-speed characteristics in the form of a

- (a) Straight line through origin
(b) Straight line parallel to the speed axis
(c) Circle about the origin
(d) Rectangular hyperbola

Ans. (d)

Q.31 In the given parallel tuned circuit at parallel resonance the impedance of the circuit is



- (a) $\frac{L}{CR}$ (b) $\frac{LC}{R}$
(c) $\frac{R}{LC}$ (d) LCR

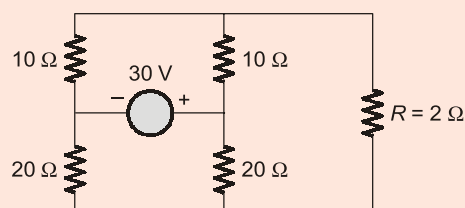
Ans. (a)

Q.32 Super position theorem is valid only for

- (a) Linear circuits
(b) Non-linear circuits
(c) Both (a) and (b)
(d) Neither (a) nor (b)

Ans. (a)

Q.33 In the circuit shown below, what will be the value of current through resistance R ?



- (a) $\frac{3}{2}$ A (b) $\frac{3}{4}$ A
(c) 0 A (d) $\frac{9}{4}$ A

Ans. (c)

Q.34 If an R-C driving point impedance function, $z(s)$ has equal number of pole and zeros at finite locations, then

- (a) $z(0) \leq z(\infty)$ (b) $z(0) \geq z(\infty)$
(c) $z(0) < z(\infty)$ (d) $z(0) > z(\infty)$

Ans. (d)

Q.35 A Hartley oscillator is used for generating

- (a) Very low frequency oscillations
- (b) Radio frequency oscillations
- (c) Microwave oscillations
- (d) Audio frequency oscillations

Ans. (b)

Q.36 For the most accurate model the diode forward current is

- (a) $I_D = I_S(e^{qV_D/nRT} - 1)$
- (b) $I_D = I_S(1 - e^{qV_D/nRT})$
- (c) $I_D = I_S(e^{-qV_D/nRT} - 1)$
- (d) $I_D = I_S(1 - e^{-qV_D/nRT})$

Ans. (a)

Q.37 For the input-output characteristic of amplifier shown in figure below the voltage gain is

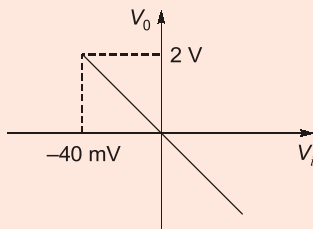


Figure : Typical input-output characteristic of inverting amplifiers.

- (a) $A = 50$
- (b) $A = -50$
- (c) $A = 0.08$
- (d) $A = -0.08$

Ans. (b)

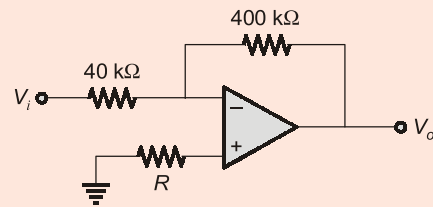
Q.38 In a crystal oscillator, a crystal has thickness of t . If you reduce t by 1%, what happens to the frequency ' f '?

- (a) f will increase by 2%.
- (b) f will decrease by 2%.
- (c) f will increase by 1%.
- (d) f will decrease by 1%.

Ans. (c)

Q.39 For the circuit shown in figure below the value of

$$A_V = \frac{V_o}{V_i} \text{ is}$$



- (a) -10
- (b) 10
- (c) -11
- (d) 11

Ans. (a)

Q.40 For an electric field $E = E_0 \sin \omega t$, what is the phase difference between the conduction current and displacement current?

- (a) 0°
- (b) 45°
- (c) 90°
- (d) 180°

Ans. (c)

Q.41 Match List-I and List-II and select the correct answer using the codes :

List-I

- (a) Continuity equation
- (b) Ampere's Law
- (c) Displacement current
- (d) Faraday's Law

List-II

1. $\nabla \times \vec{H} = \vec{J} + \frac{\partial \vec{D}}{\partial t}$
2. $\vec{J} = \frac{\partial \vec{D}}{\partial t}$
3. $\nabla \times \vec{E} = -\frac{\partial \vec{B}}{\partial t}$
4. $\nabla \times \vec{J} = -\frac{\partial \vec{P}_v}{\partial t}$

Codes :

	A	B	C	D
(a)	4	3	2	1
(b)	4	1	2	3
(c)	2	3	4	1
(d)	2	1	4	3

Ans. (b)

Q.42 List-II gives Mathematical Expressions for the variables given in List-I. Match List-I with List-II and select the correct answer using the codes.

List - I

- (a) Intrinsic impedance
- (b) Velocity of wave propagation
- (c) Skin depth
- (d) Attenuation constant

List - II

1. $\frac{1}{\sqrt{\mu\epsilon}}$
2. $\sqrt{\mu/\epsilon}$
3. $\frac{1}{\sqrt{\mu f \pi \sigma}}$
4. $\frac{1}{f \sqrt{\mu \omega}}$
5. $\sqrt{\omega \mu \sigma}$

Codes :

	A	B	C	D
(a)	1	2	3	4
(b)	2	1	4	5
(c)	2	1	3	5
(d)	1	2	5	3

Ans. (c)

Q.43 The ratio of charge stored by two metallic spheres raised to the same potential is 6. The ratio of the surface areas of the sphere is

- (a) 6
- (b) $\frac{1}{6}$
- (c) 36
- (d) $\frac{1}{\sqrt{6}}$

Ans. (c)

Q.44 In cylindrical co-ordinates $\frac{1}{\rho} \frac{\partial}{\partial \rho} \left(\rho \frac{\partial V}{\partial \rho} \right) + \frac{1}{\rho^2} \frac{\partial^2 V}{\partial \phi^2}$

= 0 is

- (a) Laplace's equation
- (b) Poisson's equation
- (c) Euler's equation
- (d) None of the above

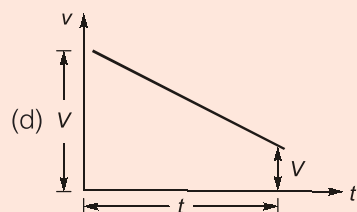
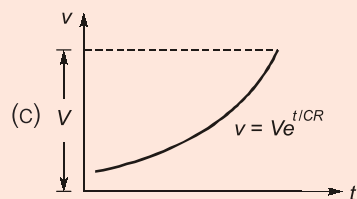
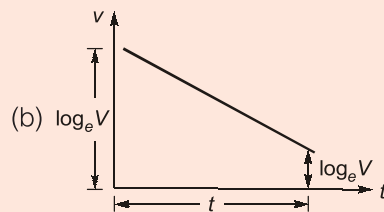
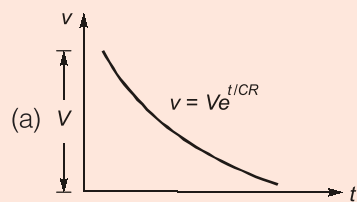
Ans. (a)

Q.45 Which of the following instruments are capable of serving as transfer instruments?

- (a) Moving Iron
- (b) Moving Coil
- (c) Electro Dynamometer
- (d) None of the above

Ans. (c)

Q.46 For measurement of high resistance by loss of charge method which graph be used for more accurate results?



Ans. (a)

Q.47 The scale of moving coil instruments are

- (a) Linear
- (b) Non-linear
- (c) Not uniform
- (d) None of the above

Ans. (a)



MODULEWISE COURSES for ESE 2021 + GATE 2021

Comprehensive Online Course for ESE 2021 + GATE 2021

- **GATE + ESE : CE, ME, EE, EC** • **GATE : CS, IN**
- Duration:** 4-5 week for one module.

- Comprehensive online classes by experienced and renowned faculties of MADE EASY.
- Subjects prescribed in module, covers all the topics for GATE & ESE examination.
- The course will also be immensely useful for various State Engineering and PSU Exams.
- Concept practice through workbook questions.
- Provision of books and reading references.
- Doubt clearing facility through chat window.
- Assessment of performance through tests.

Stream	Module 1	Module 2	Module 3	Module 4
CE	SOM + Surveying	SOM + Irrigation	Environmental Enggg + Fluid Mechanics	Reasoning & Aptitude + Engineering Mathematics + General English
ME	Thermo + Industrial	SOM + RAC	Theory of Machines + Fluid Mechanics	
EE	Signals + Digital	Network + Power Electronics	Power System + Control Systems	
EC	EDC + Network	Analog + Digital Circuits	Communication + Control Systems	
CS	OS + Reasoning	DBMS + Mathematics	Algorithm + Computer Organisation	
IN	----	----	Sensors and Industrial Instrumentation + Optical Instrumentation + Process Control Instrumentation (Old Syllabus + New Syllabus) Sensors and Industrial Instrumentation + Optical Instrumentation + Process Control Instrumentation (New Syllabus)	

Q.48 The first two-row of Routh's tabulation of a third order equation are

$$s^3 \quad 2 \quad 2$$

$$s^2 \quad 4 \quad 4$$

This means there are

- (a) Two roots at $s = \pm j$ and one root is right half of s -plane.
- (b) Two roots at $s = \pm j/2$ and one root is left half of s -plane.
- (c) Two roots at $s = \pm j/2$ and one root is right half of the s -plane.
- (d) Two roots at $s = \pm j$ and one root is left half of s -plane.

Ans. (d)

Q.49 The open-loop transfer function of a unity feedback control system is given by $G(S) =$

$\frac{K(S+2)}{(S+1)(S-7)}$ for $K > 6$, the stability characteristic of the open-loop and closed-loop configurations of the system are respectively

- (a) Stable and stable
- (b) Unstable and stable
- (c) Stable and unstable
- (d) Unstable and unstable

Ans. (b)

Q.50 A second order control system has a transfer function $\frac{16}{s^2 + 4s + 16}$. What is the time for the first overshoot?

- (a) $\frac{2\pi}{\sqrt{3}} S$
- (b) $\frac{\pi}{\sqrt{3}} S$
- (c) $\frac{\pi}{2\sqrt{3}} S$
- (d) $\frac{\pi}{4\sqrt{3}} S$

Ans. (c)

Q.51 Derivative error compensation is employed in feedback control system to

- (a) Increase the effective damping in the system
- (b) Decrease the effective damping in the system
- (c) Improve the stable state response of system
- (d) None of the above

Ans. (a)

Q.52 Consider the characteristic polynomial of a feedback system $q(s) = s^4 + s^3 + s^2 + s + K$

- (a) The system is stable for all $K > 0$
- (b) The system is unstable for $K > 0$
- (c) $K = 8$ results in marginal stability
- (d) None of the above is correct

Ans. (b)

Q.53 Effect of back emf in a armature controlled dc servomotor is

- (a) To increase effective motor friction thereby reducing motor time constant.
- (b) To increase effective motor friction thereby increasing motor time constant
- (c) To increase motor inertia, thereby increasing motor time constant.
- (d) To increase motor inertia, thereby reducing motor time constant.

Ans. (a)

Q.54 A linear time invariant system is described by state variable model

$$\begin{bmatrix} \dot{x}_1 \\ \dot{x}_2 \end{bmatrix} = \begin{bmatrix} -1 & 0 \\ 0 & 2 \end{bmatrix} \begin{bmatrix} x_1 \\ x_2 \end{bmatrix} + \begin{bmatrix} 0 \\ 1 \end{bmatrix} u$$

$$y(t) = \begin{bmatrix} 1 & 2 \end{bmatrix} \begin{bmatrix} x_1 \\ x_2 \end{bmatrix}$$

- (a) The system is uncontrollable and completely observable
- (b) The system is completely controllable and observable
- (c) The system is completely controllable and unobservable
- (d) The system is uncontrollable and unobservable

Ans. (a)

Q.55 The most commonly used input signal in control system is

- (a) Step function
- (b) Ramp function
- (c) Accelerating function
- (d) All of the above

Ans. (a)

- Q.56** When a two winding transformer is connected as an auto transformer its efficiency at full load
- (a) Decreases (b) Increases
(c) Remains same (d) None of the above

Ans. (b)

- Q.57** During blocked rotor test on an induction motor, the power is drawn mainly for
- (a) Core loss
(b) Copper loss
(c) Windage and friction loss
(d) Both (a) and (b)

Ans. (b)

- Q.58** A synchronous phase modifier as compared to the synchronous motor used for mechanical loads has
- (a) Larger shaft and higher speed
(b) Smaller shaft and higher speed
(c) Larger shaft and lower speed
(d) Smaller shaft and lower speed

Ans. (b)

- Q.59** A 6-pole lap-connected DC generator has 480 conductors and armature circuit resistance is 0.06 ohm. If the conductors are reconnected to form wave winding, other things remaining unchanged, the value of armature circuit resistance will be
- (a) 0.01 Ω (b) 0.08 Ω
(c) 0.36 Ω (d) 0.54 Ω

Ans. (d)

- Q.60** The relative speed between the magnetic fields of stator and rotor under steady state operation is zero for
- (a) Induction Motor
(b) DC Machine
(c) A synchronous machine
(d) All of the above

Ans. (d)

- Q.61** During hunting of synchronous motor
- (a) Negative phase sequence currents are generated
(b) Damper bar develops torque

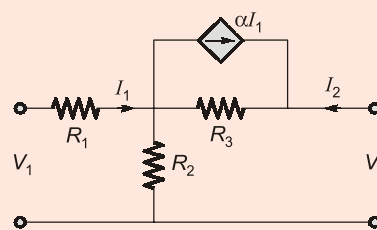
- (c) Harmonics are developed in the armature circuit
(d) Field excitation increases

Ans. (b)

- Q.62** The DC Motor, which can provide zero speed regulation at full load without any controller is
- (a) Series motor
(b) Shunt motor
(c) Cumulative compound
(d) Differential compound

Ans. (d)

- Q.63** The hybrid parameter h_{12} for the two port network shown in figure



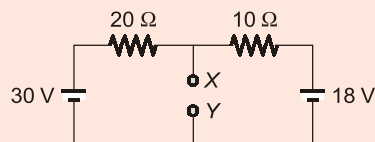
- (a) $\frac{\alpha R_2}{(R_2 + R_3)}$ (b) $\frac{(1-\alpha)R_3}{R_2 + R_3}$
(c) $\frac{(1-\alpha)R_2}{R_2 + R_3}$ (d) $\frac{R_2}{(R_2 + R_3)}$

Ans. (d)

- Q.64** Fourier transform and Laplace transform are related through
- (a) Time domain
(b) Frequency domain
(c) Both time and frequency domains
(d) None of these

Ans. (b)

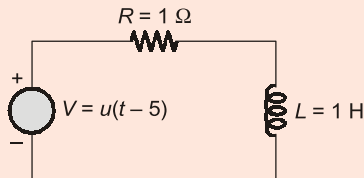
- Q.65** Find Norton equivalent current source at terminal X-Y in figure below



- (a) $I_N = 4 \text{ mA}$, $R_N = 5 \Omega$
 (b) $I_N = 1 \text{ A}$, $R_N = 3.5 \Omega$
 (c) $I_N = 2.5 \text{ A}$, $R_N = 6 \Omega$
 (d) $I_N = 3.3 \text{ A}$, $R_N = 6.67 \Omega$

Ans. (d)

Q.66 A unit step voltage $u(t-5)$ is applied to the R-L network below. The current is given by

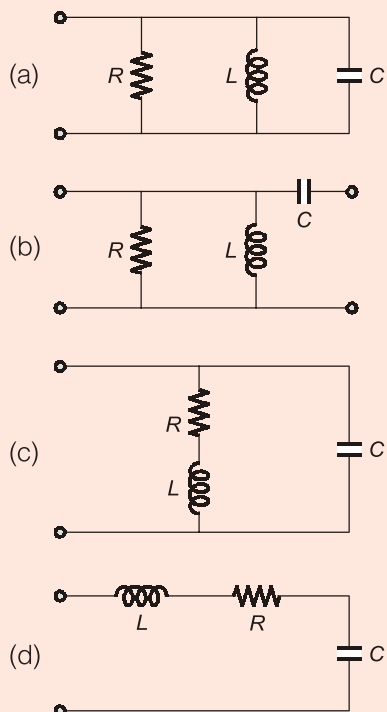


- (a) $1 - e^{-t}$
 (b) $[1 - e^{-(t-5)}]u(t-5)$
 (c) $[1 - e^{-t}]u(t-5)$
 (d) $1 - e^{-(t-5)}$

Ans. (b)

Q.67 An R-L-C circuit for the driving point admittance

function $\left[\frac{1/RLS}{\left(\frac{1}{R} + \frac{1}{LS} \right)} + CS \right]$ is



Ans. (c)

Q.68 An ideal current source has zero

- (a) Internal conductance
 (b) Internal resistance
 (c) Voltage on no-load
 (d) Ripple

Ans. (a)

Q.69 The drain gate capacitance of a junction FET is 2 pF . Assuming common source voltage gain of 20, what is the input capacitance due to Miller effect?

- (a) 21 pF (b) 40 pF
 (c) 42 pF (d) 10 pF

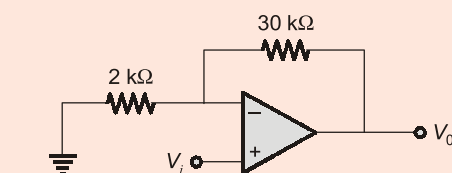
Ans. (c)

Q.70 Which of the following for the JFETs is NOT applicable?

- (a) Depletion Mode (N-Channel)
 (b) Depletion Mode (P-Channel)
 (c) Enhancement Mode (N-Channel)
 (d) None of the above

Ans. (c)

Q.71 Consider the non-inverting amplifier circuit of figure given below. The closed loop voltage gain is



- (a) 16 (b) -14
 (c) 15 (d) 14

Ans. (a)

Q.72 If the bias voltage applied across the p-n junction increases the potential barrier, the applied voltage is known as

- (a) Forward bias voltage
 (b) Reverse bias voltage
 (c) Transition voltage
 (d) None of the above

Ans. (b)

ONLINE TEST SERIES



**GATE
2021**

54 Tests
1782 Questions

Graduate Aptitude Test in Engineering

Streams: CE, ME, EE, EC, CS, IN, PI

- On Revised syllabus of GATE 2021.
- Newly introduced MSQs questions added.
- Quality questions as per standard and pattern of GATE.
- Fully explained and well illustrated solutions.
- Due care taken for accuracy.
- Comprehensive performance analysis report.

Combined Package of GATE 2020 + GATE 2021 also available (108 Tests)

**ESE 2021
Prelims**

34 Tests
2206 Questions

Engineering Services Examination 2021

Preliminary Examination

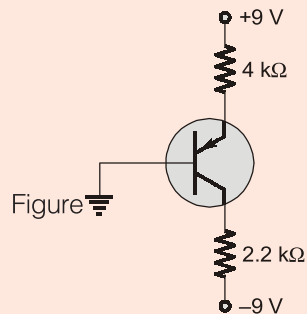
Streams: CE, ME, EE, E&T

- Quality questions as per standard and pattern of ESE.
- Includes tests of Paper-I (GS & Engg. Aptitude) and Paper-II (Technical)
- Fully explained and well illustrated solutions.
- Due care taken for accuracy.
- Comprehensive performance analysis report.

Combined Package of ESE 2020 + ESE 2021 Pre also available (68 Tests)



Q.73 For the circuit shown below the transistor $\alpha = 0.992$, the value of voltage V_{BC} is



- (a) 8.51 V (b) 4.47 V
(c) 2.16 V (d) 10.23 V

Ans. (b)

Q.74 A plane electromagnetic wave is travelling in an unbounded, lossless dielectric having $\mu_r = 1$ and $\epsilon_r = 4$. The time average poynting vector of the wave is 5 W/m^2 . The phase velocity V_p (assuming velocity of light as $3 \times 10^8 \text{ m/s}$) is

- (a) $3 \times 10^8 \text{ m/s}$ (b) $2.5 \times 10^8 \text{ m/s}$
(c) $0.5 \times 10^8 \text{ m/s}$ (d) $1.5 \times 10^8 \text{ m/s}$

Ans. (d)

Q.75 A long, straight wire carries a current $I = 100 \text{ A}$. At what distance the magnetic field is 1 A/m ?

- (a) 1.59 m (b) 0.159 m
(c) 0.0159 m (d) 15.9 m

Ans. (d)

Q.76 For a transmission line if $\frac{L}{C} = \frac{R}{G}$ then which of the following is incorrect?

- (a) $Z_0^2 = \frac{R}{G}$
(b) The line is called a distortionless line.
(c) If a series of pulses are transmitted they arrive undistorted.
(d) The line is lossless.

Ans. (d)

Q.77 Check whether the potential function $V = A \log p + B$ in cylindrical co-ordinate is a solution of Laplace's equation. A and B are constants.

- (a) Satisfies
(b) Not satisfies
(c) Can not be concluded
(d) None of the above

Ans. (a)

Q.78 Find the volume charge density that is associated with the field $D = a_r \text{ C/m}^2$.

- (a) 1 C/m^3 (b) 0 C/m^3
(c) $\frac{2}{r} \text{ C/m}^3$ (d) $r \text{ C/m}^3$

Ans. (c)

Q.79 In a fluxmeter, the controlling torque is

- (a) Produced by weight attached to the moving coil.
(b) Produced by spring.
(c) Not provided at all.
(d) Provided by crossed coil mechanism.

Ans. (c)

Q.80 Thermistors can be used as

- (a) Measurement of thermal conductivity.
(b) Vacuum measurements.
(c) Measurement of composition of gases.
(d) All of the above

Ans. (d)

Q.81 The value of capacitor C connected across swamp resistance (R) of voltmeter (M/I) be

- (a) $C = \frac{L}{R^2}$ (b) $C = LR^2$
(c) $C = \frac{L^2}{R}$ (d) None of the above

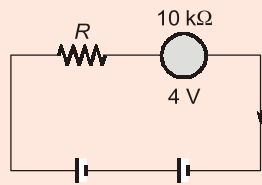
Ans. (a)

Q.82 Which of the following statistical method can be used for a single sample data?

- (a) Frequency distribution
(b) Uncertainty distribution
(c) Standard deviation
(d) None of the above

Ans. (c)

- Q.83** In the shown figure, what is the value of unknown resistor R ? The voltmeter reads 4 V.



- (a) 110 kΩ (b) 290 kΩ
(c) 134 kΩ (d) 245 kΩ

Ans. (* Insufficient Data)

- Q.84** Which of the following instrument is free from hysteresis and eddy current loss?

- (a) Moving iron instruments
(b) PMMC instruments
(c) Electrostatic instruments
(d) Dynamometer type instruments

Ans. (c)

- Q.85** Match List-I with List-II and select the correct answer using the codes given below :

List - I

- (a) Megger
(b) Spectrum Analyser
(c) Scherring Bridge
(d) Digital Counter Codes

List - II

- (1) Measurement of loss angle in a dielectric
(2) Measurement of frequency
(3) Measurement of insulation resistance
(4) Measurement of harmonics

Codes :

- | | A | B | C | D |
|-----|---|---|---|---|
| (a) | 1 | 2 | 3 | 4 |
| (b) | 1 | 2 | 4 | 3 |
| (c) | 4 | 3 | 2 | 1 |
| (d) | 3 | 4 | 1 | 2 |

Ans. (d)

- Q.86** Load flow study is carried out for

- (a) Fault calculations
(b) Stability studies
(c) System planning
(d) Load frequency control

Ans. (c)

- Q.87** The zero sequence current of a generator for line to ground faults is $j3.0$ p.u. Then the current through the neutral during the fault is

- (a) $j3.0$ p.u. (b) $j1.0$ p.u.
(c) $j9.0$ p.u. (d) $j0.3$ p.u.

Ans. (c)

- Q.88** Calculate the sag for a span of 200 m if the ultimate tensile strength of conductor is 6000 kgf. Allow a factor of safety of 2.

- (a) 1.0 m (b) 1.5 m
(c) 2.0 m (d) 2.5 m

Ans. (* Insufficient Data)

- Q.89** A generating station has maximum demand of 30 MW, load factor 60% and plant capacity factor of 50%. The reserve capacity of the plant is

- (a) 5 MW (b) 4 MW
(c) 6 MW (d) 10 MW

Ans. (c)

- Q.90** Power consumption in moving iron instruments are

- (a) Higher (b) Lower
(c) Lossless (d) None of the above

Ans. (a)

- Q.91** A Lassajous pattern on the oscilloscope is stationary and has 6 vertical maximum values and 5 horizontal maximum values. The frequency of horizontal input is 1500 Hz. The frequency of vertical input is

- (a) 1800 Hz (b) 1250 Hz
(c) 45000 Hz (d) None of the above

Ans. (b)

- Q.92** With an external multiplier setting of $20\text{ k}\Omega$ an analog voltmeter reads 440 V and with multiplier setting of $80\text{ k}\Omega$ it reads 352 V. Then for a multiplier setting of $40\text{ k}\Omega$, the voltmeter will read

- (a) 370 V (b) 402 V
(c) 406 V (d) 394 V

Ans. (c)

Q.93 An indicating instrument is more sensitive if its torque to weight ratio is

- (a) Much larger than unity
- (b) Of the order of unity
- (c) Much less than unity
- (d) All of the above

Ans. (a)

Q.94 Two wattmeter method can be used to measure the total power delivered to

- (a) Star connected load only
- (b) Delta connected load only
- (c) Star or Delta connected load
- (d) Star connected with neutral load

Ans. (c)

Q.95 An overhead line with surge impedance 400 ohm is terminated through a cable of impedance Z_c . A surge travelling over the line does NOT suffer any reflection at the junction. The value of Z_c is

- (a) 40 ohms
- (b) 500 ohms
- (c) 450 ohms
- (d) None of these

Ans. (d)

Q.96 In the HVDC system, the ac harmonics which get effectively eliminated with 12-pulse bridge converters are

- (a) Triplen harmonics
- (b) Triplen and 5th harmonics
- (c) Triplen, 5th and 7th harmonics
- (d) 5th and 7th harmonics

Ans. (d)

Q.97 The capacitances of a 3-core belted cable are measured and found to be as (i) between 3-cores bunched together and the sheath is 15 μF (ii) between a conductor and the other two connected together to the sheath is 10 μF . Then capacitance to neutral value in μF is

- (a) 12.5
- (b) 12.0
- (c) 9.5
- (d) 8.5

Ans. (a)

Q.98 The incremental cost characteristics of the two generators delivering a total load of 200 MW are as follows :

$$\frac{dF_1}{dP_1} = 2.0 + 0.01P_1$$

$$\frac{dF_2}{dP_2} = 1.6 + 0.02P_2$$

What should be the values of P_1 and P_2 for economic operation?

- (a) $P_1 = P_2 = 100$ MW
- (b) $P_1 = 80$ MW, $P_2 = 120$ MW
- (c) $P_1 = 200$ MW, $P_2 = 0$ MW
- (d) $P_1 = 120$ MW, $P_2 = 80$ MW

Ans. (d)

Q.99 The insulation of the modern EHV lines is designed based on

- (a) Corona
- (b) Radio interference
- (c) The switching voltage
- (d) The lightning voltage

Ans. (c)

Q.100 The coefficient of reflection of voltage for short circuited line is

- (a) -1.0
- (b) 1.0
- (c) 0.0
- (d) None of the above

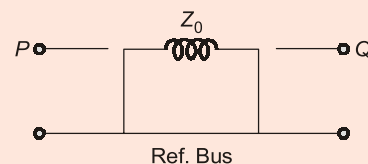
Ans. (a)

Q.101 For line to line fault on an unloaded generator, then

- (a) $Ia_1 = Ia_2$
- (b) $Ia_1 = -Ia_2$
- (c) $Ia_1 + Ia_2 = Ia_0$
- (d) None of the above

Ans. (b)

Q.102 The following figure shows zero sequence equivalent circuits of



- (a) $\Delta - \Delta$ Bank
- (b) Y - Δ Bank
- (c) Y - Y bank
- (d) Y-Y Bank (with ground symbols)

Ans. (a)



MADE EASY

India's Best Institute for IES, GATE & PSUs

Exclusive Package

12

Full Syllabus Tests

**GATE 2021
Online Test Series**

Stream: CE, ME, EE, EC, CS, IN, PI

Rs. 500/- +GST

- ✓ As per revised pattern and syllabus of GATE 2021.
- ✓ Fully explained and well illustrated solutions.
- ✓ Facility of asking your doubt with experts.

Click to enroll



www.onlinetestseriesmadeeasy.in

Q.103 The maximum demand of a consumer is 2 kW and the corresponding daily energy consumption is 30 units. What is the corresponding load factor?

- (a) 25% (b) 50%
(c) 62.5% (d) 75%

Ans. (c)

Q.104 The voltage regulation of a shunt transmission line will be maximum when the value of $\tan \phi_R$ for lagging power factor is

- (a) Unity (b) Zero
(c) $\frac{R}{X_2}$ (d) $\frac{X_2}{R}$

Ans. (d)

Q.105 The -180° phase line of Bode diagram is equal to

- (a) Positive imaginary axis in Nyquist plot
(b) Negative imaginary axis in Nyquist plot
(c) Positive real axis in Nyquist plot
(d) Negative real axis in Nyquist plot

Ans. (d)

Q.106 Let $X' = \begin{bmatrix} 1 & 2 \\ 0 & 1 \end{bmatrix} X + \begin{bmatrix} 1 \\ 0 \end{bmatrix} U$; $U = [b, 0]X$ where b is an unknown constant. This system is

- (a) Observable for all values of b
(b) Unobservable for all values of b
(c) Observable for all non-zero values of b
(d) Unobservable for all non-zero values of b

Ans. (c)

Q.107 Consider solar radiation of 200 J/m² and per unit time during daylight, find the area of Photo Voltaic (PV) cells needed to generate enough electric power to run (i) a desktop computer of 400 W (ii) an electric geyser of 1 kW and (iii) a toaster of 500 W. Assume the efficiency of PV to be 25%.

- (a) 38 m² (b) 8 m²
(c) 5 m² (d) 20 m²

Ans. (a)

Q.108 Sheaths are used in cables to

(a) Provide mechanical strength
(b) Provide proper insulation
(c) Prevent ingress of moisture
(d) None of the above

Ans. (c)

Q.109 A negative area control error means that

- (a) The area is not generating enough power to send the desired amount out of the area.
(b) The area is generating more power to send the desired amount out of the area.
(c) The area is generating power to meet its own requirement.
(d) None of the above

Ans. (a)

Q.110 In a three-phase system the current in the return path through neutral is

- (a) $3I_{a0}$ (b) $3I_{a1}$
(c) $3I_{a2}$ (d) None of the above

Ans. (a)

Q.111 At the swing bus specified are

- (a) P, Q (b) $|V|, \delta$
(c) P, V (d) None of the above

Ans. (b)

Q.112 The efficiency of a transmission line

- (a) Increases with decrease in load p.f.
(b) Is independent of load p.f.
(c) Increases with increase in load p.f.
(d) Decreases with increase in load p.f.

Ans. (c)

Q.113 Feedback control system is basically

- (a) Band pass filter (b) High pass filter
(c) Low pass filter (d) Band stop filter

Ans. (c)

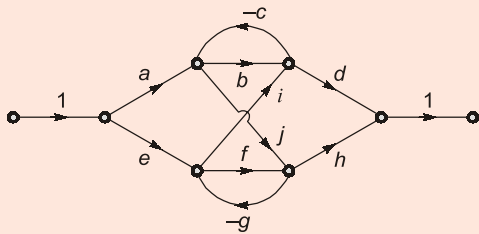
Q.114 The open-loop transfer function of a system is

$T(S) = \frac{K}{(S+1)^3}$. The phase crossover takes place at $\omega_C = \sqrt{3}$. For the gain cross also occur at ω_C , the value of K should be

- (a) 10 (b) 8
(c) 18 (d) 1

Ans. (b)

Q.115 The determinant of graph Δ for the SFG shown below is



- (a) $1 - bc - fg - bcfg - cigj$
- (b) $1 - bc - fg - cigj + bcfg$
- (c) $1 + bc + fg + cigj - bcfg$
- (d) $1 + bc + fg + bcfg - cigj$

Ans. (d)

Q.116 A second order control system is defined by the following differential equation :

$$4 \frac{d^2 c(t)}{dt^2} + 8 \frac{dc(t)}{dt} + 16c(t) = 16r(t)$$

The damping ratio and natural frequency for this system are respectively

- (a) 0.50 and 4 rad/sec
- (b) 0.25 and 4 rad/sec
- (c) 0.25 and 2 rad/sec
- (d) 0.50 and 2 rad/sec

Ans. (d)

Q.117 The break away point in the root loci plot for the loop transfer function $G(S) = \frac{K}{S(S+3)^2}$ is

- (a) -2.5
- (b) -1.0
- (c) -2.0
- (d) -0.5

Ans. (b)

Q.118 Consider the loop transfer function

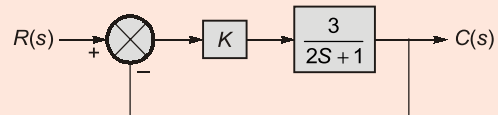
$$G(S)H(S) = \frac{K(S+6)}{(S+3)(S+5)}$$

In root-locus diagram the centroid is located at

- (a) -4
- (b) -2
- (c) -1
- (d) -3

Ans. (b)

Q.119 For what value of K is the time constant of the system of figure given below is less than 0.2 sec?



- (a) $K > 3$
- (b) $K > 5$
- (c) $K > 7$
- (d) $K > 9$

Ans. (a)

Q.120 The transfer function $G(S) = C(SI - A)^{-1}b$ of the system

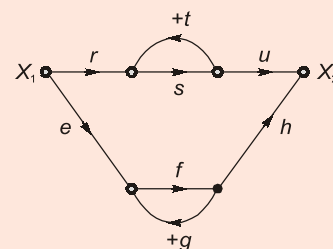
$$\begin{aligned} x' &= Ax + bu \\ y &= Cx + du \end{aligned}$$

has no pole-zero cancellation. The system

- (a) is controllable and observable
- (b) is observable but uncontrollable
- (c) is controllable but unobservable
- (d) None of the above

Ans. (a)

Q.121 For the signal flow diagram shown in figure, the transmittance between X_1 and X_2 is



- (a) $\frac{rst}{1-eh} + \frac{rsu}{1-st}$
- (b) $\frac{rsu}{1-fg} + \frac{efh}{1-st}$
- (c) $\frac{efh}{1-ru} + \frac{rsu}{1-eh}$
- (d) $\frac{rsu}{1-st} + \frac{efh}{1-fg}$

Ans. (d)

Q.122 In a speed control system, output rate feedback is used to

- (a) Limit the speed of motor
- (b) Limit the acceleration of the motor
- (c) Reduce the damping of the system
- (d) Increase the gain margin

Ans. (c)

Q.123 The sparking at the brushes of a dc generator is due to

- (a) Reactance voltage
- (b) Armature reaction
- (c) Light load
- (d) High resistance of the brushes

Ans. (a)

Q.124 The purpose of using oil in the transformer is

- (a) Cooling
- (b) Insulation
- (c) Cooling and insulation
- (d) Lubrication

Ans. (c)

Q.125 If residual magnetism is NOT present in a d.c. generator the induced emf at zero speed

- (a) 10% of rated voltage
- (b) 50% of rated voltage
- (c) Zero
- (d) Same as the rated voltage

Ans. (c)

